

overview

Applied Algebra and Trigonometry is a course designed to develop the student's mathematical concepts, improve logical thinking, and help to promote success. This mathematics course combines a second course in algebra with an introductory study of trigonometry.

THINKING...



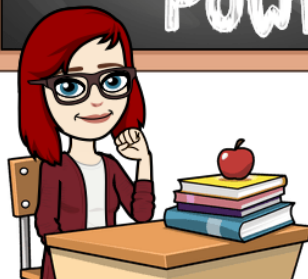
Late & Make-up Work

Students are expected to turn in assignments as they are due. Late assignments will have 10% deducted each day it is late, up to 5 days. Make-up work is accepted ONLY for excused absences. I will follow the school policy on absences. Assignments will be listed in the classroom and on Google Classroom. Be careful of TARDINESS as it will not be tolerated. You are expected to be in your seat when the bell rings. **IT IS YOUR RESPONSIBILITY TO RESCHEDULE MISSED ASSESSMENTS!**

Topics Studied

- ✓ Unit 0: Review
- ✓ Unit 1: Graphs, Equations and Inequalities
- ✓ Unit 2: Functions and Their Graphs
- ✓ Unit 3: Polynomial and Rational Functions
- ✓ Unit 4: Exponential and Logarithmic Functions
- ✓ Unit 5: Systems of Equations and Inequalities
- ✓ Unit 6: Trigonometric Functions
- ✓ Unit 7: Analytic Trigonometry
- ✓ Unit 8: Applications of Trigonometric Functions
- ✓ Unit 9: Analytic Geometry (Conics)
- ✓ Unit 10: Sequences and Series
- ✓ Unit 11: Counting and Probability
- ✓ Unit 12: Polar Coordinates

*Subject to change



WELCOME TO

Applied Algebra & Trigonometry



Ms. Lightfoot

Room 3010M
amanda.lightfoot@bedford.
k12.va.us

expectations

Prompt
Prepared
Positive
Polite
Productive

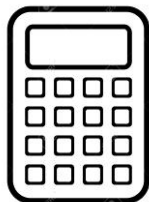
Beginning of class → Take your seat, put your phone/headphones away, read the board, log into Google Classroom to complete entrance ticket, and check answers to homework.

During class → Be an active participant in your learning. Listen, collaborate, and ask questions.

End of class → Stay in your seat until dismissed by Ms. Lightfoot.

required materials

- ✓ Fully charged Chromebook
- ✓ Pencil
- ✓ Scientific Calculator



grades

10%: HOMEWORK (PRACTICE):

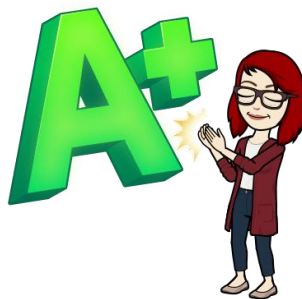
Practice problems will be assigned almost daily. Every practice will be graded on completion only and will be due by the day of the Unit Test. However, answers will be given in class the day after the problems are assigned. Homework is graded on a 5-point scale.

30%: FORMATIVES:

Entrance and Exit Tickets will be used in the classroom to assess your prior knowledge and your understanding after the lesson. Pop quizzes are possible throughout the year, and these will count as formative grades.

60%: SUMMATIVES:

Quizzes, tests and application assignments will be used to assess students on information they should know. Test Corrections are possible, regardless of the score on the unit test, but students must have successfully (score of 3 or higher) on 80% of the homework assignments in that unit.



All assignments MUST be completed in pencil to receive credit.

technology

We will utilize Google Classroom daily. You must "join" my class by going to classroom.google.com and enter this code:

- **1st period:** zv1hzk4
- **4th period:** 7wkbous
- **5th period:** slxo7d
- **6th period:** wwysfy



I will also use Remind, a texting reminder service. To receive texts, please send a text to 81010 with the message: **@apprig**

Academic dishonesty

Academic dishonesty will NOT be tolerated under any circumstances. Cheating, copying, plagiarism, or use of PhotoMath of any form will result in the following consequences:

- failure of the assignment
- disciplinary referral
- parent contact

JUST DON'T DO IT.

